

OMAHA

Instructions For Assembling MECO OMAHA MAINTENANCE PLATFORM MPL5 AND ACCESSORIES

IMPORTANT INSTRUCTIONS AND SAFETY PRECAUTIONS

1. **DO NOT** use platform unless safety chain is secured to fork lift.
2. Lock gate in place before using platform.
3. Avoid contact with electrical wires or outlets.
4. **DO NOT** lean over rails.
5. **DO NOT** stand on any exterior portion of the platform.
6. Use platform only when fork lift driver is present.

**MINIMUM CAPACITY
OF TRUCK ON WHICH
THE PLATFORM CAN
BE USED (LBS)**

2000

**MAXIMUM LOAD
INCLUDING
PERSONNEL AND
EQUIPMENT (LBS)**

1000

**FAILURE TO COMPLY WITH ALL INSTRUCTIONS AND SAFETY PRECAUTIONS
MAY CAUSE PROPERTY DAMAGE AND/OR PERSONAL INJURY.**



**NOTE: Shown with optional accessories
not included with standard unit.**

MODERN EQUIPMENT COMPANY

2000 CUMING STREET, OMAHA, NE 68102

www.meco-omaha.com

1-800-228-7334

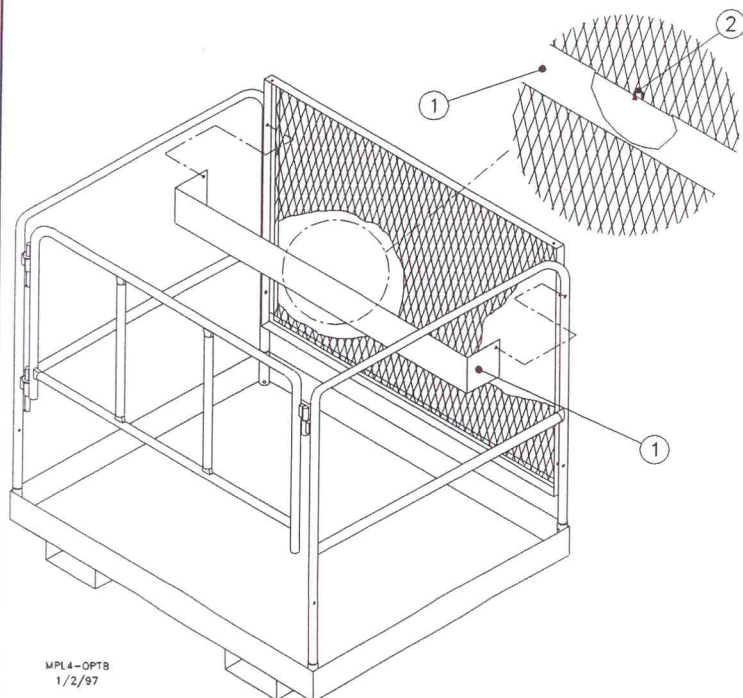
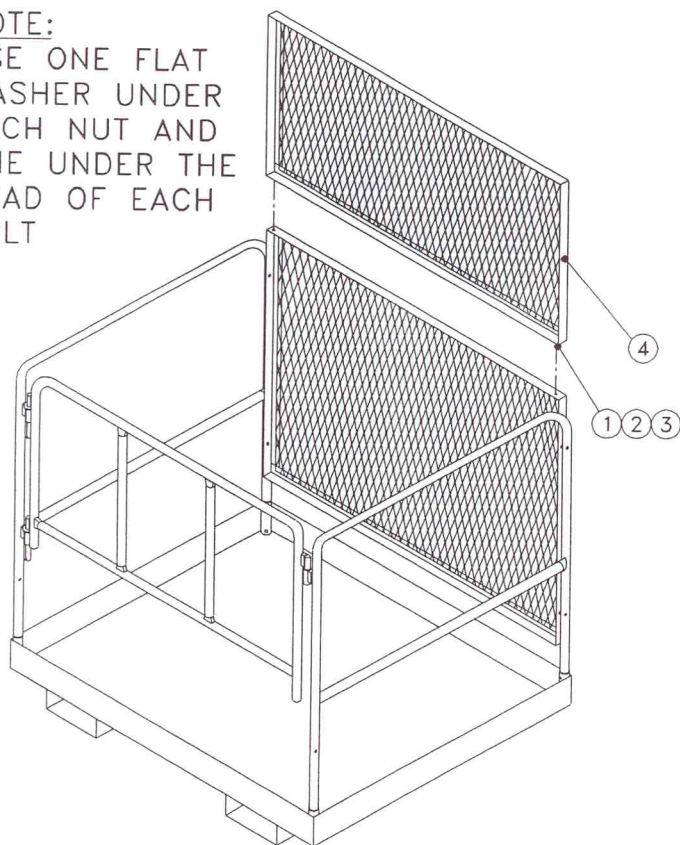
MAINTENANCE PLATFORM ACCESSORIES

PARTS LIST - BCR48

ITEM	DESCRIPTION	QUANTITY
1	5/16-18 X 3/4 BOLT	2
2	5/16-18 LOCK NUT	2
3	5/16 SAE FLAT WASHER	4
4	BCR48 WELDMENT (RISER)	1

NOTE:

USE ONE FLAT WASHER UNDER EACH NUT AND ONE UNDER THE HEAD OF EACH BOLT

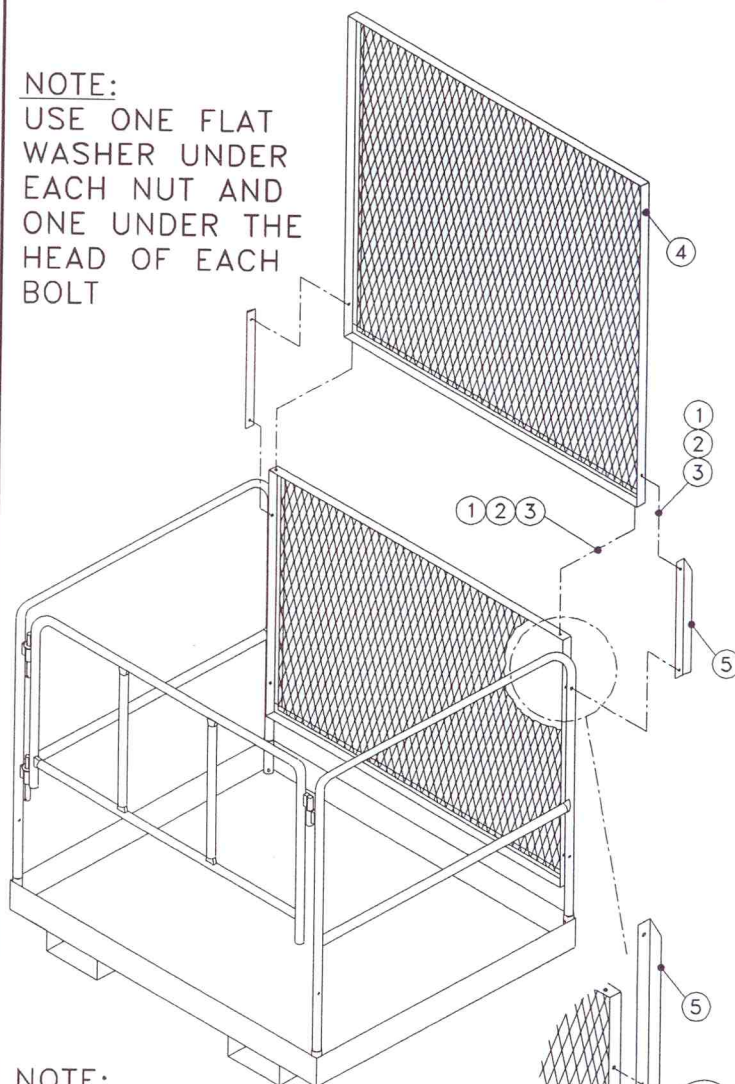


PARTS LIST - BCR48-84

ITEM	DESCRIPTION	QUANTITY
1	5/16-18 X 3/4 BOLT	4
2	5/16-18 LOCK NUT	4
3	5/16 SAE FLAT WASHER	8
4	BCR48-84 WELDMENT (RISER)	1
5	BCR36-84 STIFFENER	2

NOTE:

USE ONE FLAT WASHER UNDER EACH NUT AND ONE UNDER THE HEAD OF EACH BOLT



NOTE:

THE BCR36-84 STIFFENERS ARE ASSEMBLED BETWEEN THE MPL BACK PANEL AND THE MPL SIDES USING THE EXISTING HARDWARE.

EXISTING HARDWARE

PARTS LIST - TT48

ITEM	DESCRIPTION	QUANTITY
1	TT48 WELDMENT (TOOL TRAY)	1
2	CABLE TIE	1

NOTE

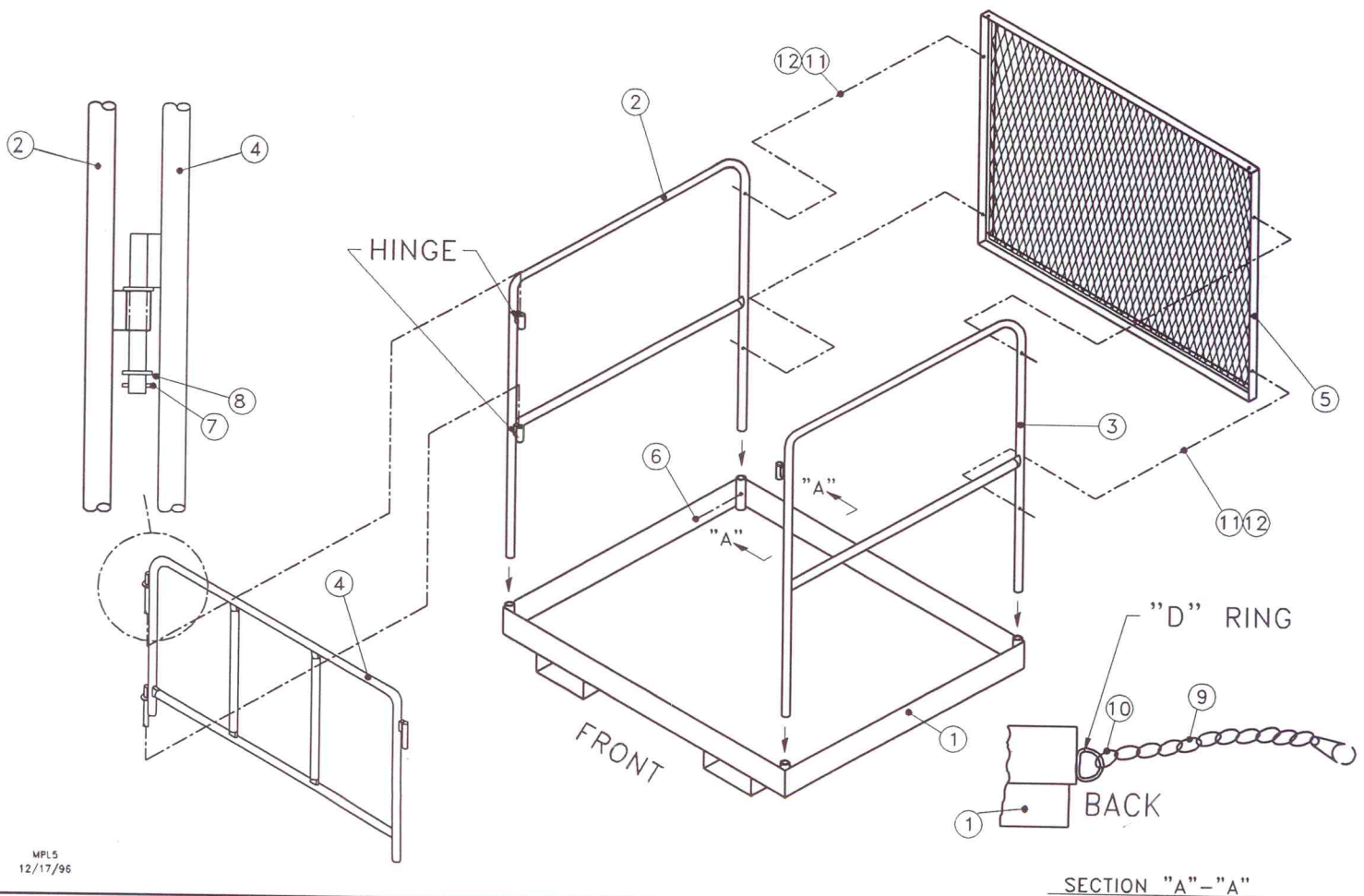
USE EXISTING HARDWARE

PARTS LIST - MPL5

ITEM	DESCRIPTION	QUANTITY
1	MPL5 BASE WELDMENT (48 X 48)	1
2	MPL3 LEFT SIDE TUBE WELDMENT	1
3	MPL3 RIGHT SIDE TUBE WELDMENT	1
4	MPL4 GATE WELDMENT	1
5	MPL4 BACK PANEL WELDMENT	1
6	3/8-16 X 1/2 SET SCREW	1
7	1/8 X 1 COTTER PIN	4
8	5/8 SAE FLAT WASHER	2
9	2/0 CHAIN, 29" W/ SNAP	2
10	1/4 LAP LINK	1
11	5/16-18 X 1 3/4 BOLT	4
12	5/16-18 LOCK NUT	4

NOTE:

1. ASSEMBLE GATE (4) TO SIDES (2) & (3) BEFORE TIGHTENING SET SCREWS (6).
2. THE HINGES ON THE SIDES (2) & (3) MUST BE TO THE FRONT OF THE BASE (1).
THE "D" RING IS AT THE BACK OF THE BASE. USE THE LAP LINK (10) TO ATTACH THE CHAIN (9).

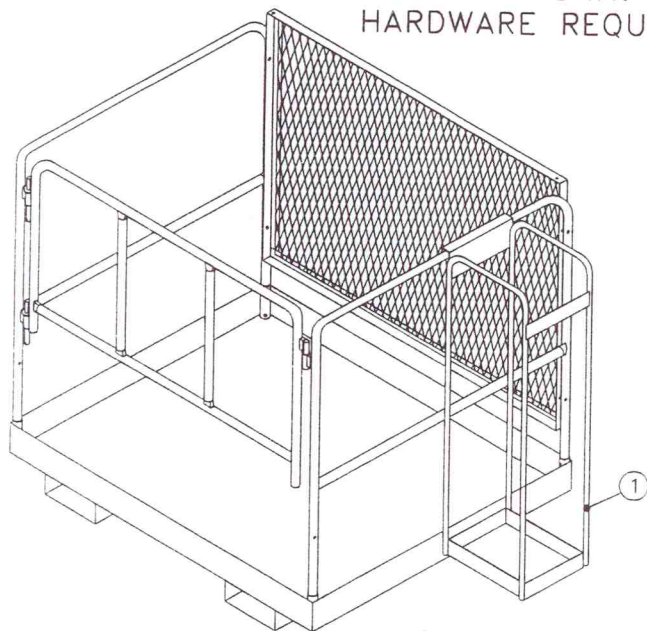


MAINTENANCE PLATFORM ACCESSORIES

PARTS LIST - FBC

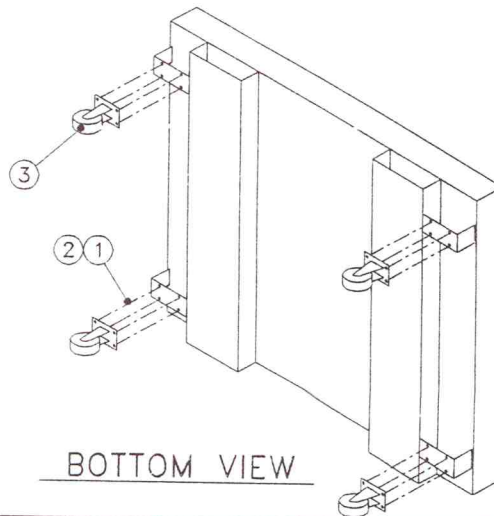
ITEM	DESCRIPTION	QUANTITY
1	FBC (BULB CADDY)	1

NOTE: BULB CADDY HANGS FROM SIDE OF MAINTENANCE PLATFORM. NO HARDWARE REQUIRED.

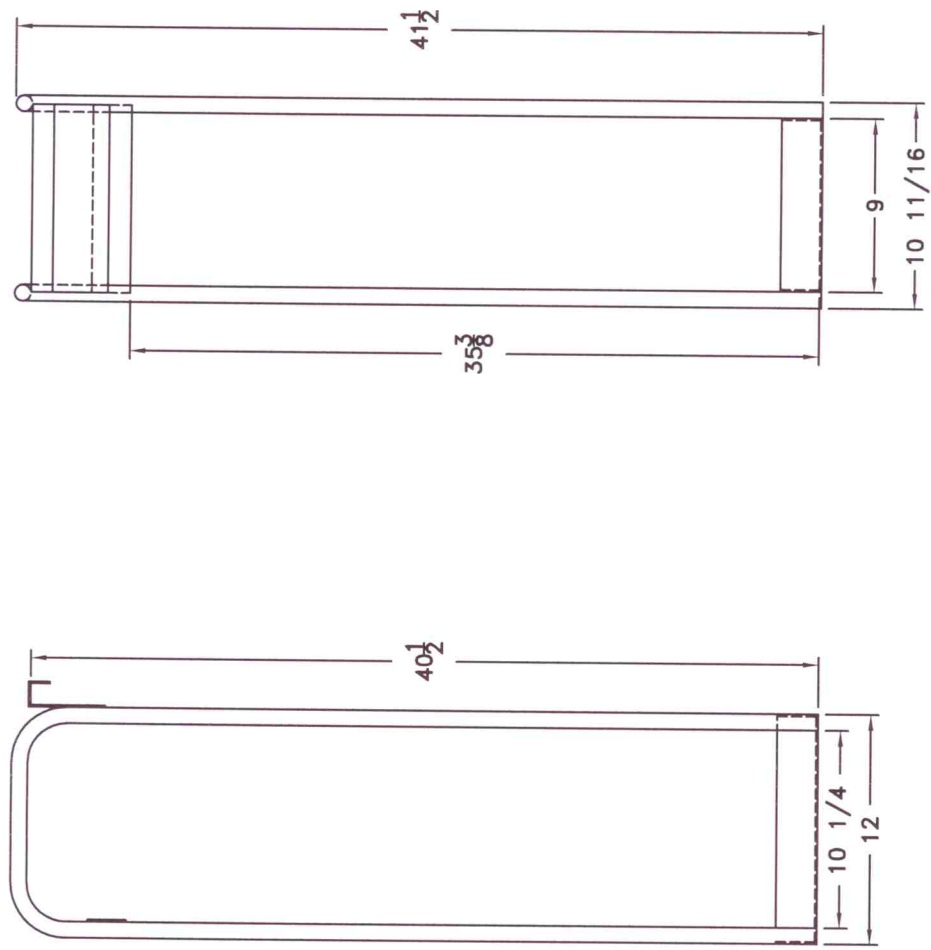


PARTS LIST - CASTERS

ITEM	DESCRIPTION	QUANTITY
1	5/16-18 X 3/4 BOLT	16
2	5/16-18 LOCK NUT	16
3	CASTERS	4



DATE	SYM	REVISION	RECORD	DR	CK



TOLERANCE (EXCEPT AS NOTED)		MODERN EQUIPMENT COMPANY			
DECIMAL		MATERIAL:	SCALE 5/32	DRAWN BY KMA/RJS APPROVED BY	
FRACTIONAL ±1/16"		TITLE FBC			
ANGULAR ±1°		DATE 8/21/95	DRAWING NUMBER		

NOTES: