

Drum Handling Solutions

OWNER'S MANUAL

DRUM CARRIER / ROTATOR SERIES DCR-205

Contents

Warnings and Safety Instructions	1 & 2	Periodic Maintenance Instructions	2
Receiving Instructions	1	Parts List	3 - 8
Warranty	1	Location of Center of Gravity	9
Safety & Operating Instructions	2	Warning Label Identification	10

WARNINGS & SAFETY INSTRUCTIONS

Read owner's manual completely before operating unit!

- Never operate drum carrier/rotator unless you are watching it.
- Never use the drum carrier/rotator if the cradle is in need of repairs or in the case of a malfunction.
- Do not stand below any part of a raised drum carrier/rotator or drum.
- Never exceed the maximum loading capacity of the drum carrier/rotator as described below:

Model DCR-205-8: 800 pounds for FULL drum, or 500 pounds for HALF-FULL drum.

Model DCR-205-15: 1500 pounds for FULL drum, or 900 pounds for HALF-FULL drum.

- Always load drum at the center of the cradle.
- Consult factory for uneven loading.
- When elevation is not required, always transport the drum in the lowered position.
- Always transport drum only in vertical position when fork truck is moving.
- Do not allow drum to impact on floor, ground, or dumping station etc., or there may be damage to the unit.
- Remove drum before working on unit.
- Consult factory if adding or performing any modification to the original equipment.
- Use only maintenance parts supplied or approved by the manufacturer.
- Make sure all operator safety labels are in place (p.10).

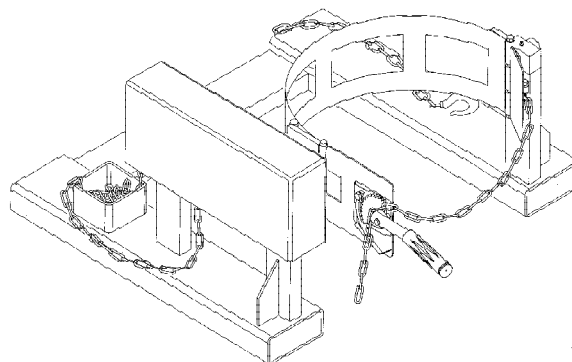
RECEIVING INSTRUCTIONS

Every unit is thoroughly tested and inspected prior to shipment. However, it is possible that the unit may incur damage during transit. If damage is noticed when unloading, make a note of it on the **BILL OF LADING**. Remove all packing and strapping material, then inspect the unit again for damage. **IF DAMAGE IS EVIDENT, FILE A CLAIM WITH THE CARRIER IMMEDIATELY!**

WARRANTY

This product is warranted for 90 DAYS from date of purchase to be free of manufacturing defects in material and workmanship.

This warranty does not cover normal wear of parts or damage resulting from any of the following: negligent use or misuse of the product, use or application contrary to installation instructions, or disassembly, repair or alteration by any person prior to authorization from a factory representative.



**DRUM CARRIER / ROTATOR
DCR-205 SERIES**

SAFETY INSTRUCTIONS FOR THE OPERATOR

- 1.) Please read all instructions THOROUGHLY before attempting to operate your new Drum Carrier/Rotator.
- 2.) The Model DCR-205-8 has a MAXIMUM CAPACITY RATING of 800 pounds for FULL drum, and 500 pounds for HALF-FULL drum. The Model DCR-205-15 has a MAXIMUM CAPACITY RATING of 1500 pounds for FULL drum, and 900 pounds for HALF-FULL drum. Both models are intended for lifting, moving, and pouring drums of size and type noted above. DO NOT exceed these ratings as the unsafe condition that may result could cause damage or excessive wear, or make the unit awkward to handle.
- 3.) When operating, loading, unloading, or maintaining your drum carrier/rotator, always use care and good judgement, have good footing and a firm hold. Keep hands and loose clothing etc., away from all moving parts. Never allow anyone to be below any part of a raised Drum Carrier/Rotator or drum. Read operating instructions before operation.

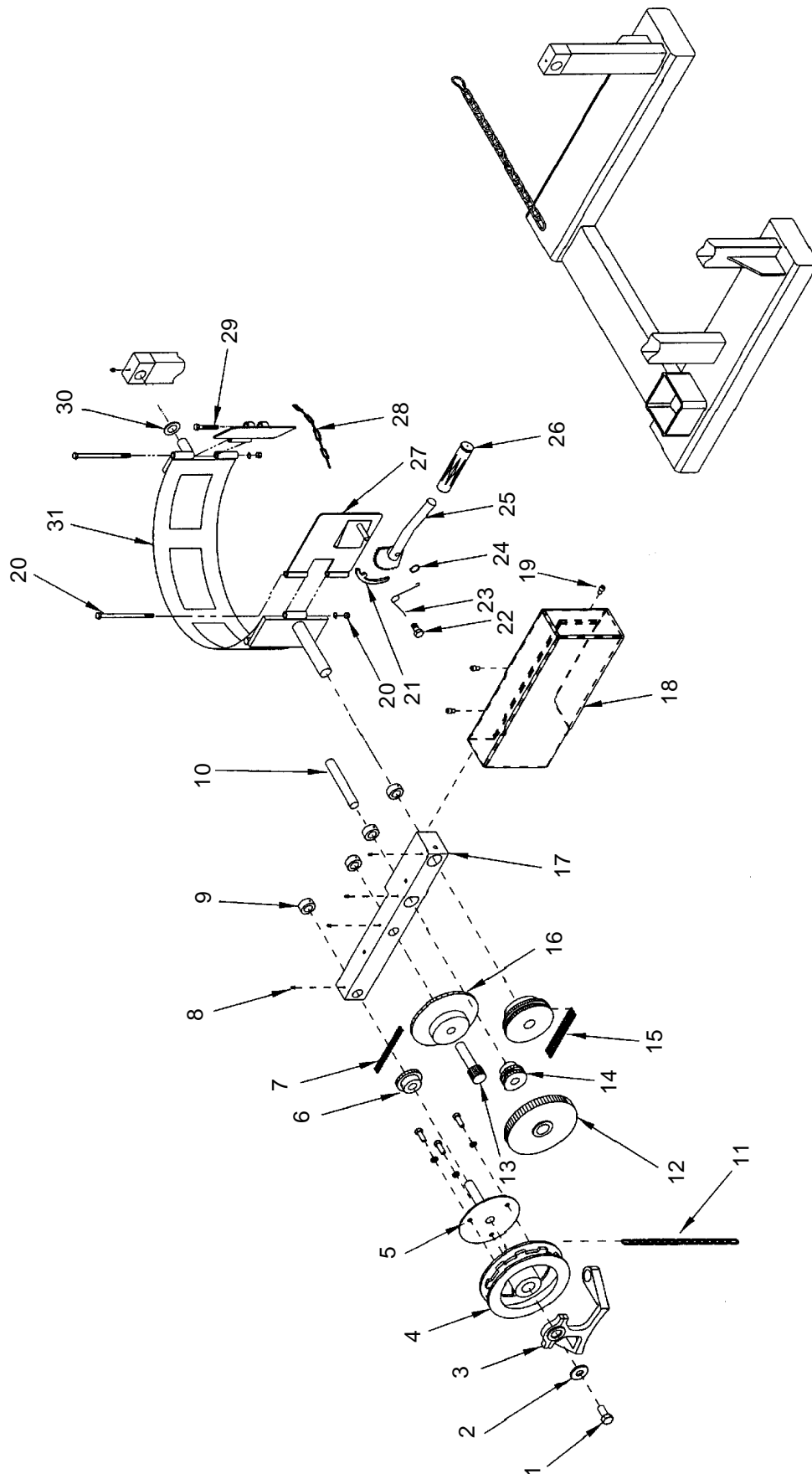
OPERATING INSTRUCTIONS

- 1.) Adjust the forks so that the inside width between the forks is 24 1/2" minimum. One fork must be locked to bed plate.
- 2.) Drive the truck forward to slip forks into fork sleeves. Attach safety chain to mast to secure drum carrier/rotator to forks.
- 3.) Open carrier cradle full width and hook cradle chain on stud.
- 4.) Drive truck with forks near floor level to position carrier cradle around drum. Lock drum in place by clinching chain with ratchet tightener.
- 5.) Remove control chain from box and place end of loop near operator's seat.
- 6.) Raise forks and transport drum in VERTICAL position.
- 7.) TO POUR DRUM: Pull on chain, rotating drum to angle required for emptying. For best control of drum pouring angle, pay out one side of the loop while pulling in the other.
- 8.) After emptying, rotate drum back to vertical position and drive the truck to deliver drum.

PERIODIC MAINTENANCE INSTRUCTIONS

- 1.) Lubricate gear-train once a month with a good grade lube. There are three grease fittings on the gear block for Model DCR-205-8 and four grease fittings for Model DCR-205-15 and one grease fitting in the idler bearing block.
- 2.) Oil cradle hinges, ratchet, pawl, chain and other moving parts periodically.
- 3.) Periodically inspect all moving parts, framework, and contact areas for signs of wear, fatigue or loosening. Tighten, adjust or replace parts as necessary to prevent failure and maintain proper functions.

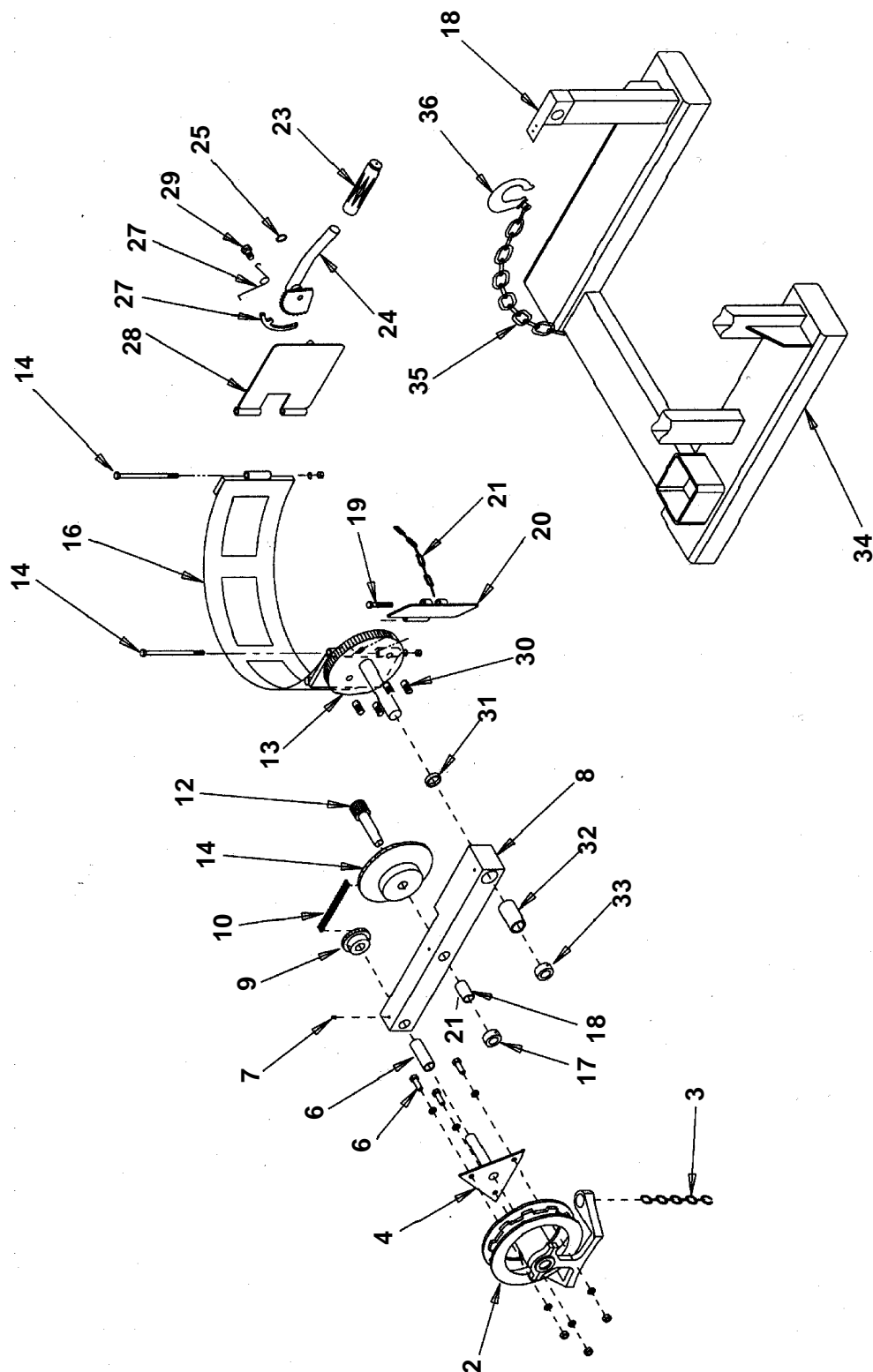
DRUM CARRIER / ROTATOR • DCR-205-8 & DCR-205-15 (Type 6-03)



DRUM CARRIER / ROTATOR • DCR-205-8 & DCR-205-15 (Type 6-03)

ITEM NO.	DESCRIPTION	ENGINEERING NO.
1	Nut, For Pull Chain Wheel	DCR - 1 - 03
2	Washer	DCR - 2 - 03
3	Pull Chain Guide	DCR - 3 - 03
4	Pull Chain Wheel	DCR - 4 - 03
5	Pull Chain Wheel MT Bracket, With Bolts & Washers	DCR - 5 - 03
6	Small Single Sprocket	DCR - 6 - 03
7	Chain, Single Sprocket	DCR - 7 - 03
8	Grease Zerk	DCR - 8 - 03
9	Shaft Collar	DCR - 9 - 03
10	Pin, Gear	DCR - 10 - 03
11	Pull Chain	DCR - 11 - 03
12	Large Gear	DCR - 12 - 03
13	Pinion Gear	DCR - 13 - 03
14	Small Double Sprocket	DCR - 14 - 03
15	Chain, Double Sprocket	DCR - 15 - 03
16	Large Sprocket	DCR - 16 - 03
17	Gear Mounting Block	DCR - 17 - 03
18	Gear Cover	DCR - 18 - 03
19	Set Screw (For Gear Cover)	DCR - 19 - 03
20	Hinge Pin & Nuts	DCR - 20 - 03
21	Pawl	DCR - 21 - 03
22	Pawl Shoulder Screw & Nut	DCR - 22 - 03
23	Pawl Spring	DCR - 23 - 03
24	Snap Ring	DCR - 24 - 03
25	Ratchet Lever	DCR - 25 - 03
26	Handle Grip	DCR - 26 - 03
27	Ratchet Plate / Door	DCR - 27 - 03
28	Binder Chain	DCR - 28 - 03
29	Chain Bolt & Nut	DCR - 29 - 03
30	Washer	DCR - 30 - 03
31	Cradle Assembly	DCR - 31 - 03

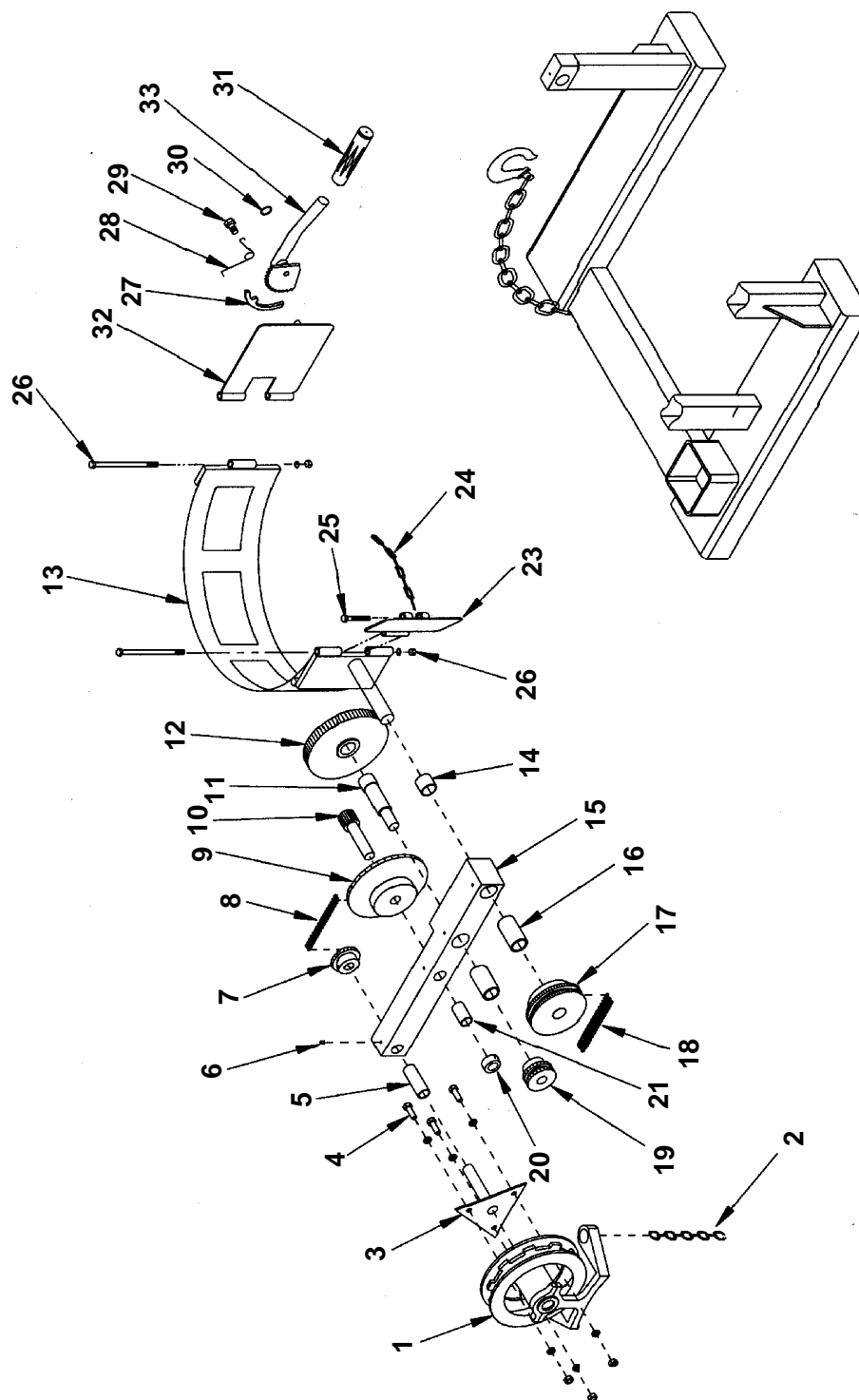
DRUM CARRIER / ROTATOR • DCR-205-8 & DCR-205-15 (Type T)



DRUM CARRIER / ROTATOR • DCR-205-8 & DCR-205-15 (Type T)

ITEM NO.	DESCRIPTION	ENGINEER NO.
1	Hand Wheel (not shown)	1A-P
2	Chain Wheel	1-P
3	Bobbit Lock Link Chain 20 ft.	2-P
4	Chain Wheel Shaft with Triangle End Bolts	3-P
5	Bolt & Nut 5/16-18 x 1	35-P
6	Bearing 3/4 ID x 2-1/2	19-P
7	Grease Fitting Alemite	33-P
8	Washer 3/4	55-P
9	Sprocket (12T #35)	11-P
10	Roller Chain (#35 - 3/8 pitch)	12-P
11	Sprocket 36T #35	13-P
12	Pinion Gear (7T x 1" ID)	14-P
13	Spur Gear (72T x 1" ID)	23-P
14	Hinge Pin & Nuts	157-P
15	Cradle Assy. for 55 Gallon Drum	1048-P
16	Bearing (Randall SH 186)	7-P
17	Collar (3/4" ID)	15-P
18	Bearing Block	53-P
19	Chain Bolt & Nut (3/8-16 x 2-1/2)	155-P
20	Chain Hinge Plate	150-P
21	Binder Chain	180-P
23	Handle Grip	136-P
24	Ratchet	165-P
25	Snap Ring	166-P
26	Pawl	168-P
27	Pawl Spring	169-P
28	Pawl & Ratchet Hinge Plate	159-P
29	Pawl Shoulder Screws & Nut	170-P
30	Spur Gear Screws (3/8-24)	22-P
31	Spur Gear Spacer	29-P
32	Bearing 1" ID x 2-1/2	18-P
33	Collar (1" ID)	16-P
34	Base Frame	DCR-205-FB
35	Safety Chain	DCR-205-SC
36	Safety Hook	DCR-205-SH

DRUM CARRIER / ROTATOR • DCR-205-8 & DCR-205-15 (Type C)

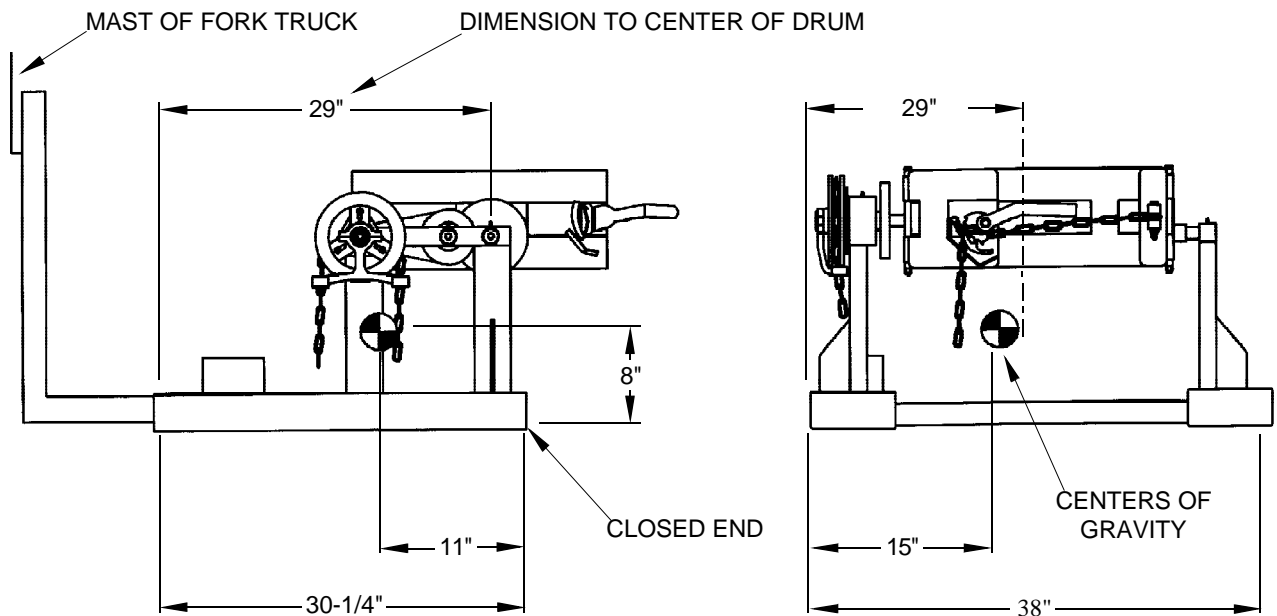


DRUM CARRIER / ROTATOR • DCR-205-8 & DCR-205-15 (Type C)

ITEM NO.	DESCRIPTION	ENGINEER NO.
1	Chain Wheel	09-042-011
2	#1/0 Bobbit Lock Link Chain 20 ft.	09-145-007
3	Chain Wheel Shaft with Triangle	09-516-059
4	Bolt & Nut 5/16 - 18 x 1	35-P
5	Bearing 3/4 ID x 2-1/2 Lg.	01-111-048
6	Grease Fitting Alemite	33-P
7	Sprocket (12T #35)	09-042-004
8	Roller Chain (#35 - 3/8 pitch)	09-042-006
9	Sprocket (36T)	09-042-003
10	Pinion Gear (11 Tooth with Key)	09-042-007
11	Shaft, 4-5/8" Long	09-112-013
12	Spur Gear (72 T x 1-1/8" Lg.)	09-042-008
13	Cradle Assembly	09-538-002
14	Spacer, 1.03 ID x 1-1/8" Lg.)	09-113-003
15	Base Frame	09-514-066
16	Bearing 1" ID x 2-1/4"	01-111-047
17	Double Sprocket 24T	09-042-001
18	Double Sprocket chain	09-042-005
19	Double Sprocket 12T	09-042-002
20	Bearing	01-111-048
21	Collar	09-145-001
23	Chain Hinge Plate	09-516-007
24	Binder Chain	09-145-008
25	Chain Bolt & Nut (3/8 - 16 x 2-1/2)	155-P
26	Hinge Pin & Nuts	157-P
27	Pawl	09-042-012
28	Pawl Spring	09-146-001
29	Pawl Shoulder Screws & Nut	170-P
30	Snap Ring	166-P
31	Handle Grip	09-025-016
32	Ratchet Plate	09-516-012
33	Ratchet Lever	09-042-014

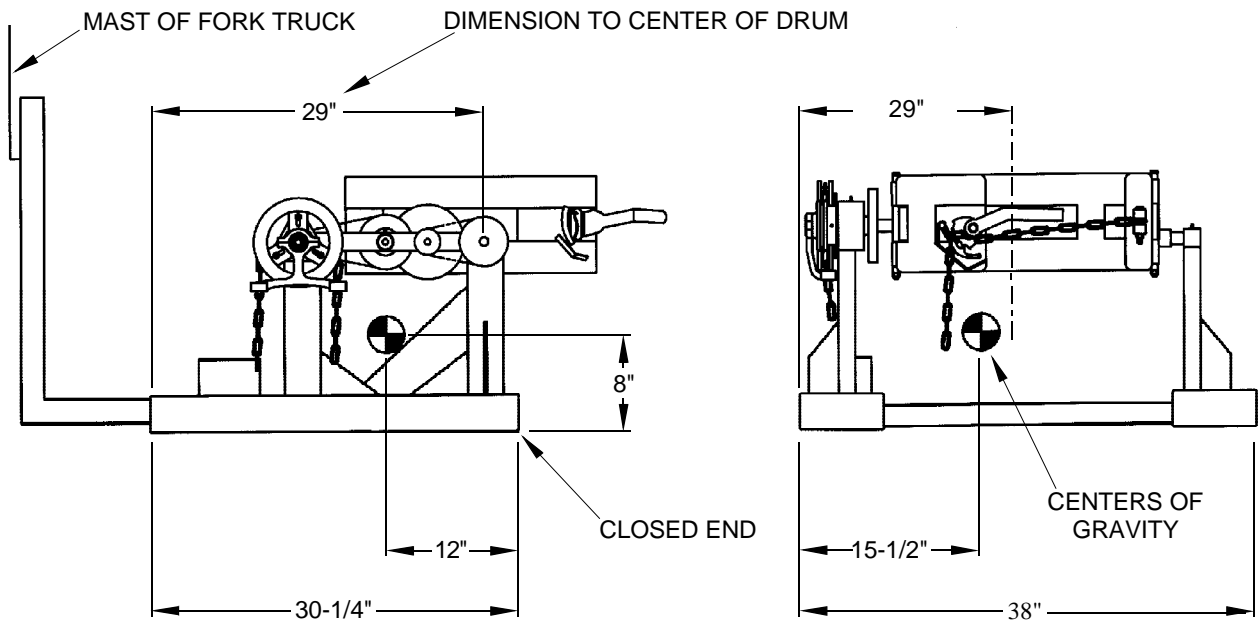
LOCATION OF CENTER OF GRAVITY

MODEL DCR-205-8



CAPACITY: 800 LBS.
TOTAL 160 LBS. LOST LOAD
FORK TUBES: 7-1/4" WIDE BY 2-1/4" HIGH

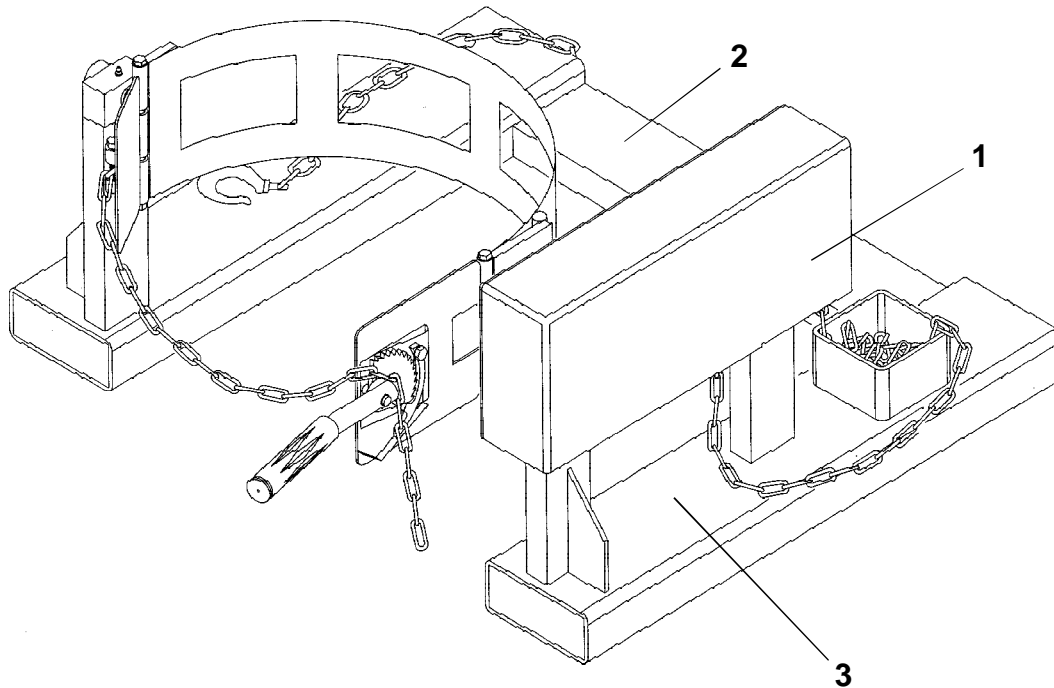
MODEL DCR-205-15



CAPACITY: 1500 LBS.
TOTAL 225 LBS. LOST LOAD
FORK TUBES: 7-1/4" WIDE BY 2-1/4" HIGH

WARNING LABEL IDENTIFICATION

MAKE SURE ALL WARNING LABELS ARE IN PLACE!



1

⚠ CAUTION

DRUM MUST BE IN A
VERTICAL POSITION
WHEN MOVING
MODEL: DCR-205-15
CAPACITY: 1,500 LBS.

VESTIL MANUFACTURING, ANGOLA, IN
Ph. (260)665-7586 Fax (219)665-1339

294

⚠ CAUTION

DRUM MUST BE IN A
VERTICAL POSITION
WHEN MOVING
MODEL: DCR-205-8
CAPACITY: 800 LBS.

VESTIL MANUFACTURING, ANGOLA, IN
Ph. (260)665-7586 Fax (219)665-1339

293

*Product safety signs or labels
should be periodically inspected
and cleaned by the product users
as necessary to maintain good leg-
ibility for safe viewing distance ...

ANSI 535.4 (10.21)

Contact manufacturer for replace-
ment labels.

2

⚠ CAUTION

SAFETY CHAIN
MUST BE FASTENED
SECURELY TO
FORKLIFT

⚠ PRECAUCION

LA CADENA DE SEGURIDAD
DEBE DE SER AGARRADA
CON SEGURIDAD A LA
TRANSPALETA

⚠ PRUDENCE

LA CHAÎNE DE
SÉCURITÉ DOIT ÊTRE
BIEN ATTACHÉE AU
MONTE-CHARGE

218

3

⚠ CAUTION

DRUM MUST BE IN
VERTICAL POSITION
WHEN MOVING

⚠ PRECAUCION

EL TAMBOR DEBE DE ESTAR
EN LA POSICIÓN VERTICAL
CUANDO EN MOVIMIENTO

⚠ PRUDENCE

LE BIDON DOIT ÊTRE EN
POSITION VERTICALE LORS
D'UN DÉPLACEMENT

232